

Innovation through experience

Extensive experience in the fields of manufacturing, optics, and mechanical engineering allows us to continually evolve our design thinking and practices.

Our diverse set of skills can help you solve your lighting quandaries by inventing new or improved products.

When an off-the-shelf product is not meeting your needs, our team is prepared with creative ideas to help you increase efficiency, improve your bottom line, and ensure your product is ground breaking in your industry.



Mark Leonard
DIRECTOR OF SALES

MLeonard@LumenFlow.com
269.795.9007 • LumenFlow.com



LumenFlow Corp.



Innovating
Illumination

Maximize production, efficiency, & durability

Whether for aerospace, transportation, agricultural or architectural applications, lighting solutions can be expensive and frustrating when they aren't reliable or long lasting.

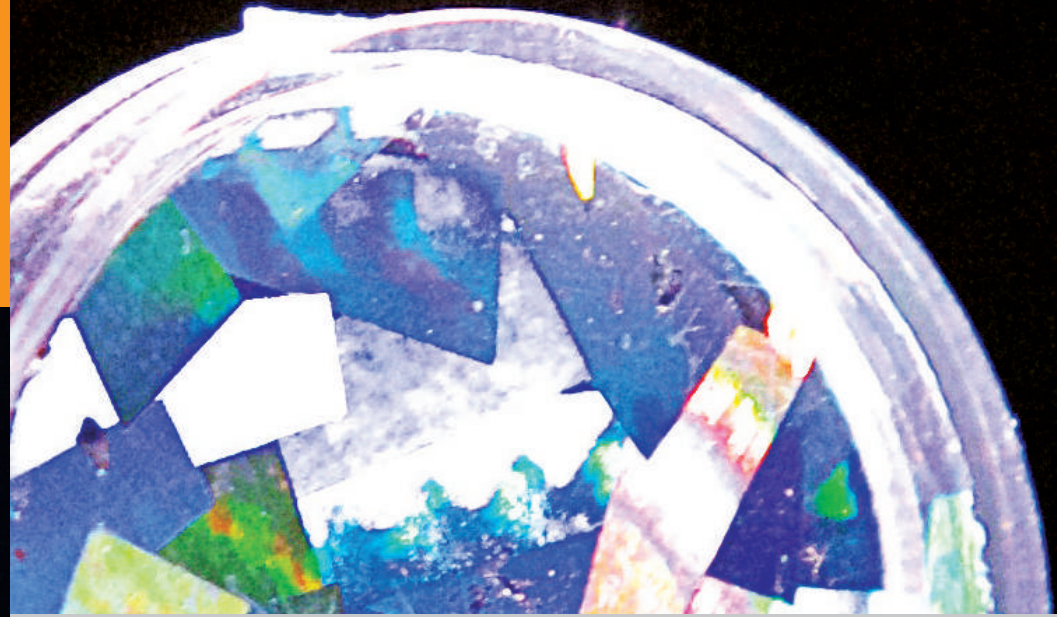
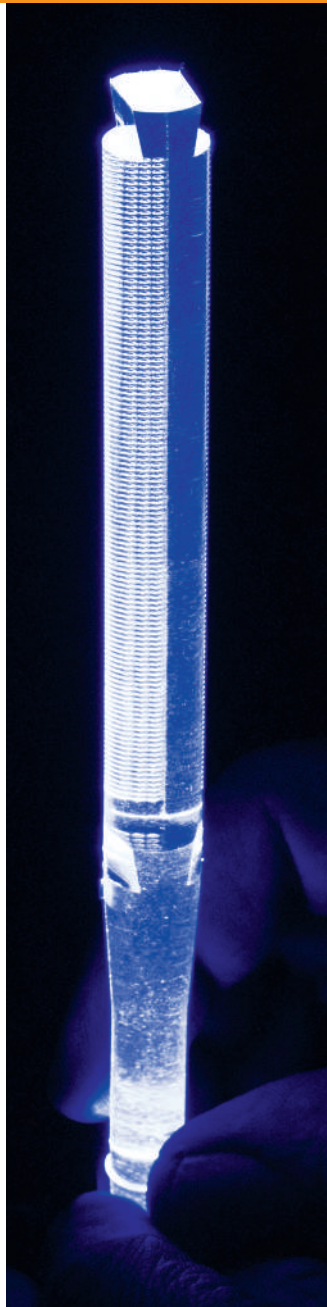
Using our innovative design and engineering process, we have developed unique lighting solutions for a variety of applications.

Aerospace

We provide ambient cabin lighting systems and safety lights that have better lighting, increased safety, and decreased weight and power consumption.

Transportation

Our high-performance interior and exterior lighting solutions meet or exceed performance requirements. State of the art projection systems improve the "wow" factor for next generation vehicles. Moldable materials, such as silicone, are highly engineered to increase performance while decreasing weight.



Agricultural

Our agricultural lighting creates a specific light spectrum to suit the individual needs of the plant or animal. We maximize food plant production in commercial/ industrial greenhouses, increase the health and longevity of ornamental plants, and assist with livestock management.

Architectural

Our wall washes, under cabinet lighting packages, and street lamps distribute existing light in a more useable and uniform manner. This ensures safety standards are met and spaces are more functional and beautiful.